

**camstage**

31 Hedley Road  
St Albans  
Hertfordshire  
AL1 5JL

**t:** +44 (0) 1727 830 151  
**f:** +44 (0) 1727 855 993  
**e:** info@camstage.com  
**w:** www.camstage.com

Electrically Operated

T300 Track



*A compact, versatile and virtually silent track system. For all AV/masking, stage and presentation requirements.*



- Virtually silent operation
- Pre-set speed 15 or 25cm / second
- Infrared control as standard
- 24 volt motor – prewiring not necessary
- Minimum bending radius 20 cm
- Also available with dual motor units
- Track available in black or white

The T300 Track is a powerful low voltage (24V) electricity operated curtain track system that is delivered ready to assemble with infrared remote control as standard. Suitable for both 110 and 240 Volt supply, system T300 can be installed quickly and simply. Setting the end of travel positions is easily carried out using the infrared transmitter supplied. With programmable 5-stop control integrated 'CAN-BUS' intelligence, the T300 is suitable for the most demanding audio visual/masking, stage and presentation applications.

## Application

Multi purpose electricity controlled track with high performance motor unit suitable for multi-system connections. Used in a wide range of audio visual, presentation and display applications.

## Material / Finish

Aluminum (higher specification than DIN 1725).

Anodised or powder coated, black or white as standard (colour co-ordinated components).

Special colors available upon request.

Supplied maximum 3 metre sections.

Profile weight: 567gm per linear metre.

## Capacity

Straight: Single 60kg; Tandem 100kg

1 curve: Single 50kg; Tandem 90kg

2 curves: 45kg; Tandem 80kg

1 large curve: Single 45kg; Tandem 80kg

*Please refer to Load Table for complete details.*

## Installation

### Bracket

Top Fix 11276

Face Fix 11276 + 11277

Max. load:-

Per Glider:

Per Wheeled runner:

Stacking centres for gliders and wheeled runners: 10mm

Delivered pre-wired for simple 24volt installation.

### Max curtain weight

100kg

100kg

1kg

1.5kg

### Fixing centres

60cm; 30cm at curtain stacking points

60cm; 30cm at curtain stacking points

Spacing 100mm

Spacing 100mm

## Bending

Minimum radius: 20cm

## Track forms or configurations

Wide range of configurations using standard lengths as straight or curved sections.

## Operation

Infrared hand-held control with 5 programmable stops: Easy control and on-site programming of the system using hand sender.

'CAN-BUS' control for AV presentations.

Individual/group control via hand-held remote or CAN-BUS.

Pre-programmed stops can be replayed via manual switching or relay closures.

RF control available.

Travel speed: Set at 15cm/sec. or 25cm/sec.

Variable speed motor facility: Launching/docking speeds and distances pre-programmed.

## Accessories

Master Release System: Allows for manual operation of curtains in the event of a power failure.

Wall Return Set: Allows curtain to be hung past the track and motor to 'box in' the whole system.

Projection Glider: Max. curtain weight 15kg.

Range of power supplies available for multiple systems.

## Load Table

(Maximum total curtain weight – kg. Maximum load per glider: 1kg)

(Length metres)	1m	2m	3m	4m	5m	6m	7m	8m	9m	10m	11m	12m	13m	14m	15m	16m	17m	18m	
(Weight kg)																			
Straight	10	20	30	40	50	60	60	60	60	60	60	60							
Straight (Tandem)							70	80	90	100	100	100	80	80	80	80	80	80	80
1 Curve	10	20	30	40	50	50	50	50	50	50	50	50							
1 Curve (Tandem)						60	70	80	90	90	90	90	70	70	70	70	70	70	70
2 Curves	10	20	30	40	45	45	45	45	45	45	45	45							
2 Curves (Tandem)					50	60	70	80	80	80	80	80	60	60	60	60	60	60	60
1 Large Curve	10	20	30	40	45	45	45	45	45	45	45	45							
1 Large Curve (Tandem)					50	60	70	80	80	80	80	80	60	60	60	60	60	60	60

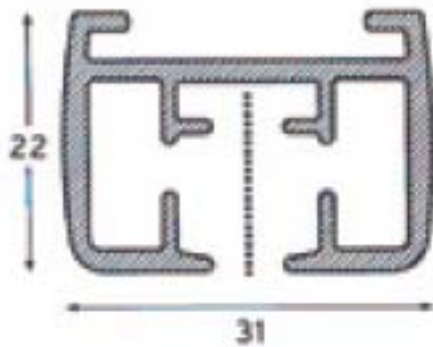
This table indicates the maximum total curtain load using standard gliders at 100mm centres.

Tandem = Dual motor unit

Curve = a 90° curve or two 45° curves. Large curve = a gradual curve with a radius of 1 metre or more.

## All Dimensions mm

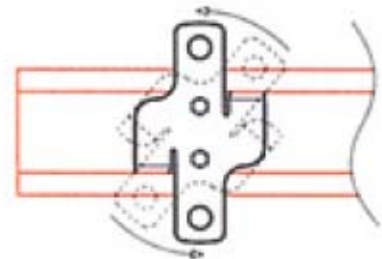
T300 Track cross section



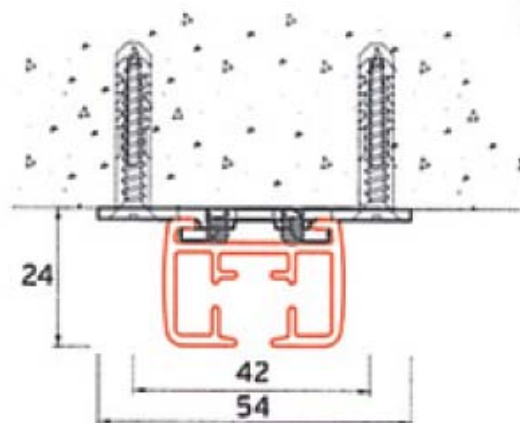
Ceiling fixing plate 11276



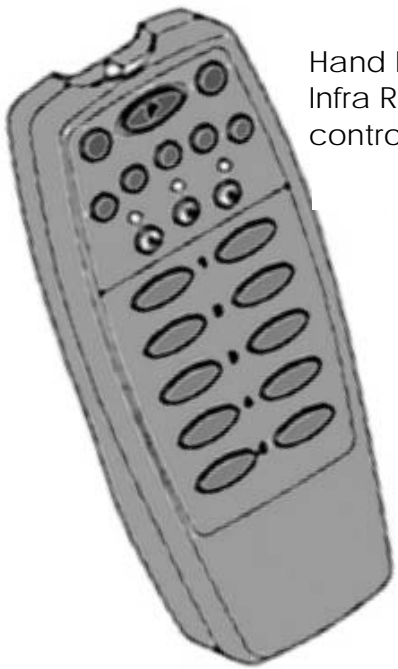
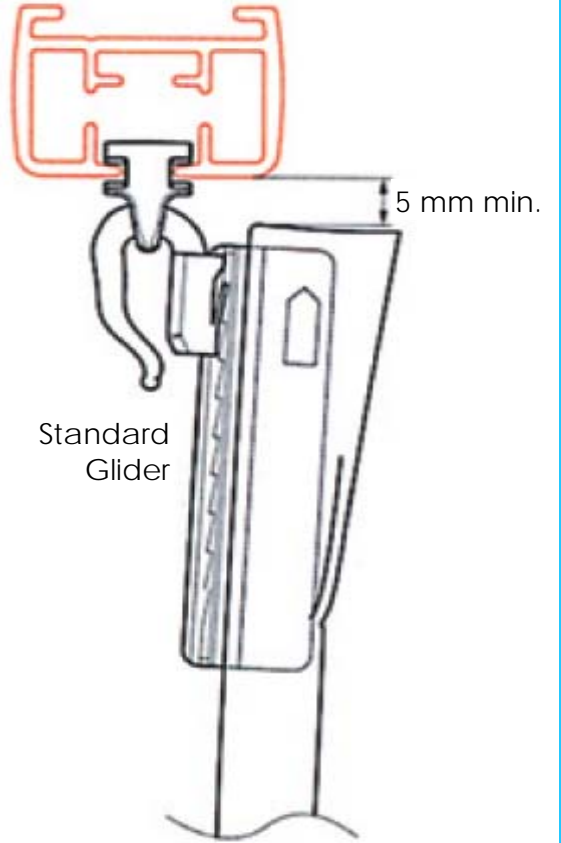
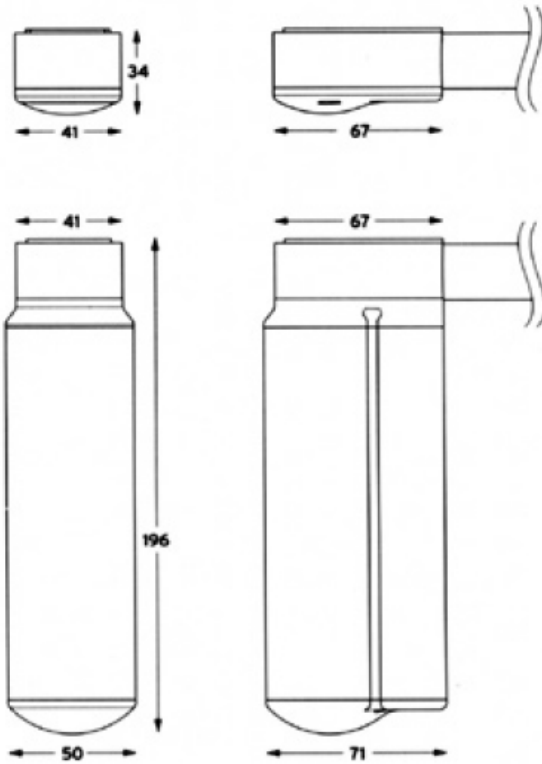
Fixing: turn and lock



T300 Track ceiling fixing



T300 Track motor assembly



Hand Held  
Infra Red  
control



Wall Return Set  
11278