

ODINE

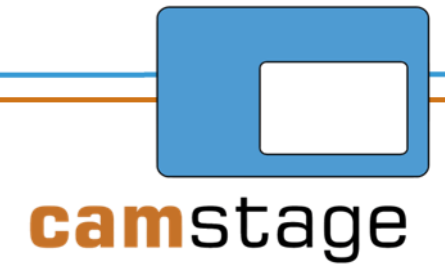
WARNING:

The patterns shown give an indication of colour. However a slight variation must be expected between dye batches, and monitors. All flame retardant materials should be kept free of dust as this may provide a fire source. Goods are offered subject to our Terms & Conditions of trading, a copy of which is available on request. We highly recommend viewing fabric samples before placing an order or manufacture.

camstage

T: +44 (0) 1727 830151

E: info@camstage.com



ODINE

Bodies & Accreditations



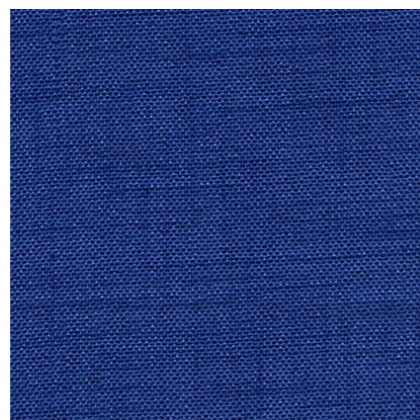
©camstage Magazine
Published January 2018

I'm a Booklet!
Save the trees and
print me short edge
duplex.

ODINE



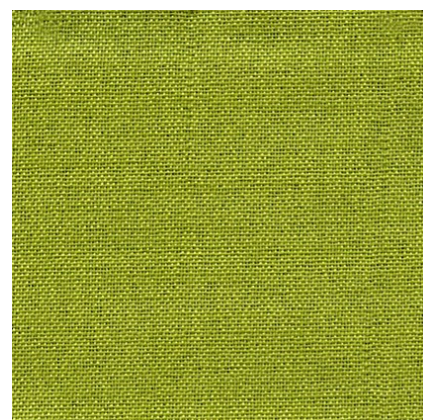
BLUE (601)
CAMODINE601



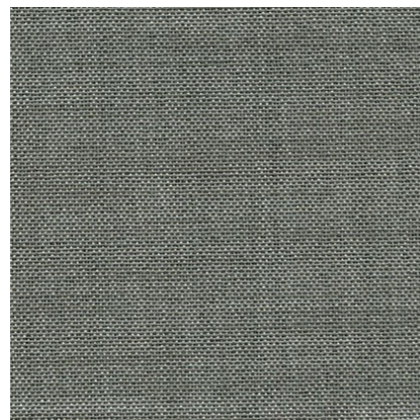
BLUE (602)
CAMODINE602



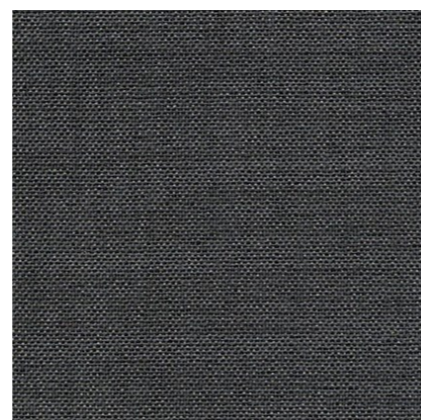
PURPLE (603)
CAMODINE603



GREEN (604)
CAMODINE604



GREY (605)
CAMODINE605



GREY (606)
CAMODINE606



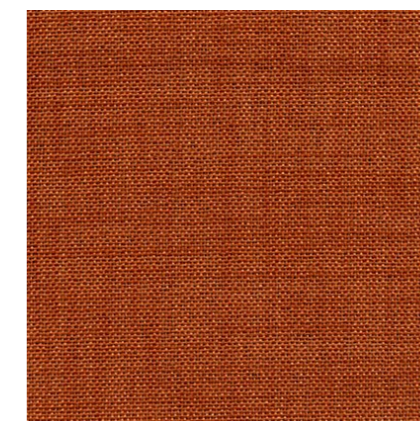
GREY (607)
CAMODINE607



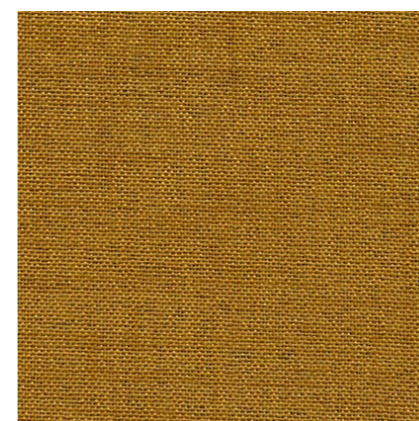
RED (608)
CAMODINE608



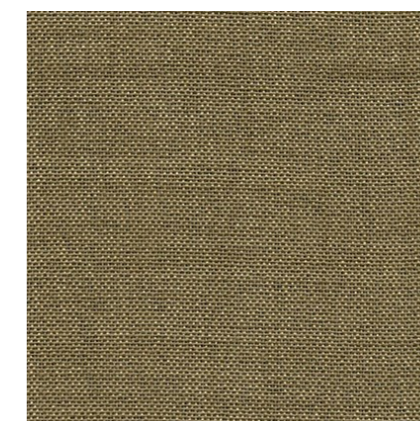
RED (609)
CAMODINE609



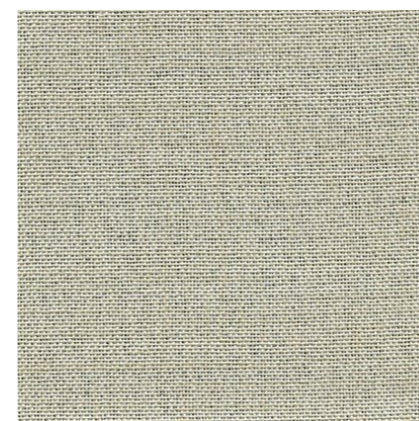
ORANGE (610)
CAMODINE610



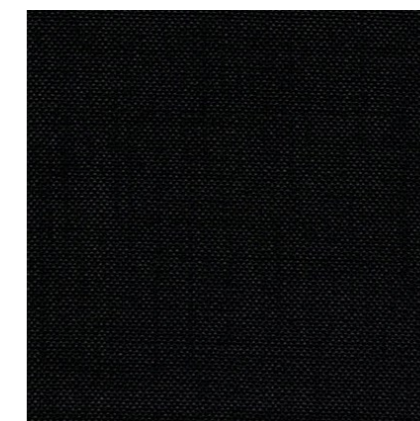
YELLOW (611)
CAMODINE611



BEIGE (612)
CAMODINE612



CREAM (613)
CAMODINE613



BLACK (614)
CAMODINE614

Technical Attributes



Widths:
300cm / 118"



Weight:
295g/m²



BS5867, EN13773



IFR
100% Polyester